

ICR GCP & Ethics Forum

**NIHR Collaboration Across the NHS, Social Care and Research
Study Teams:**

NIHR Clinical Research Network Coordinating Centre Covid-19 Research Model - The Study Support Service 2021

Lorraine Fincham

**Commercial Research Initiative Operations Manager
NIHR Clinical Research Network Coordinating Centre**

Tanya Turgoose

**Industry Operations Manager
NIHR Clinical Research Network Yorkshire & Humber**



Let's start with why...



Your thoughts...

***why do you think
support for research is provided through
national organisations?***

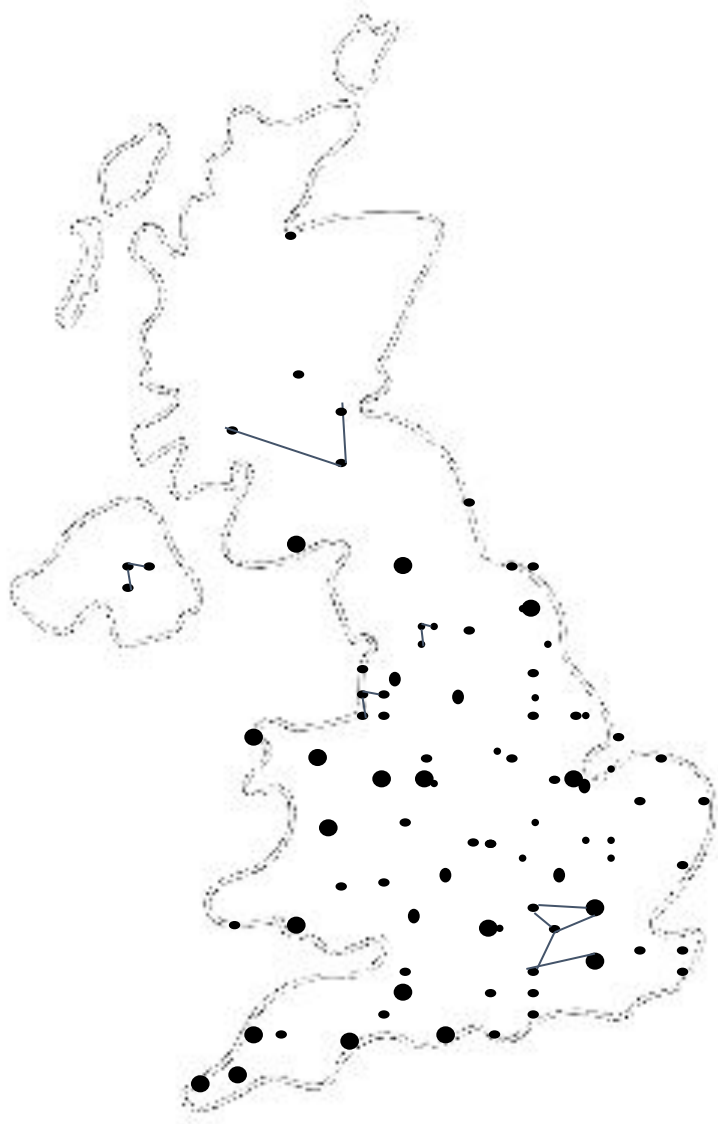
We asked attendees at our recent Life Science event to share the words that come to mind when thinking about why research support is coordinated nationwide

Our working themes

trust, visibility, **inform**, **coordinate**,
relationships, effective, **patients**, learn, test, **collaborate**,
communicate, **inclusive**, evolving, partnership, share, agile, **people**,
collective, supportive, **progress**, **underpinning**, behind-the-scenes,
frontdoor, **improve**, specialists, **vision**, nationwide, engage, **together**

Our collective support
exists to help
PLAN
PLACE
& PERFORM
research across the nation,
for the nation







Our Structure

- **Single, collective UK system-wide approach** involving NIHR, Public Health England, UK Research & Innovation, HRA, MHRA and others
- Enables a complete picture of all COVID-19 Urgent Public Health Research activity across the UK
- Ensures appropriate geographical distribution of Urgent Public Health Research to maximise recruitment and minimise over-commitment of resource
- Urgent Public Health Research prioritisation by DHSC initiated expedited study set-up and delivery activities across the research system including performance oversight



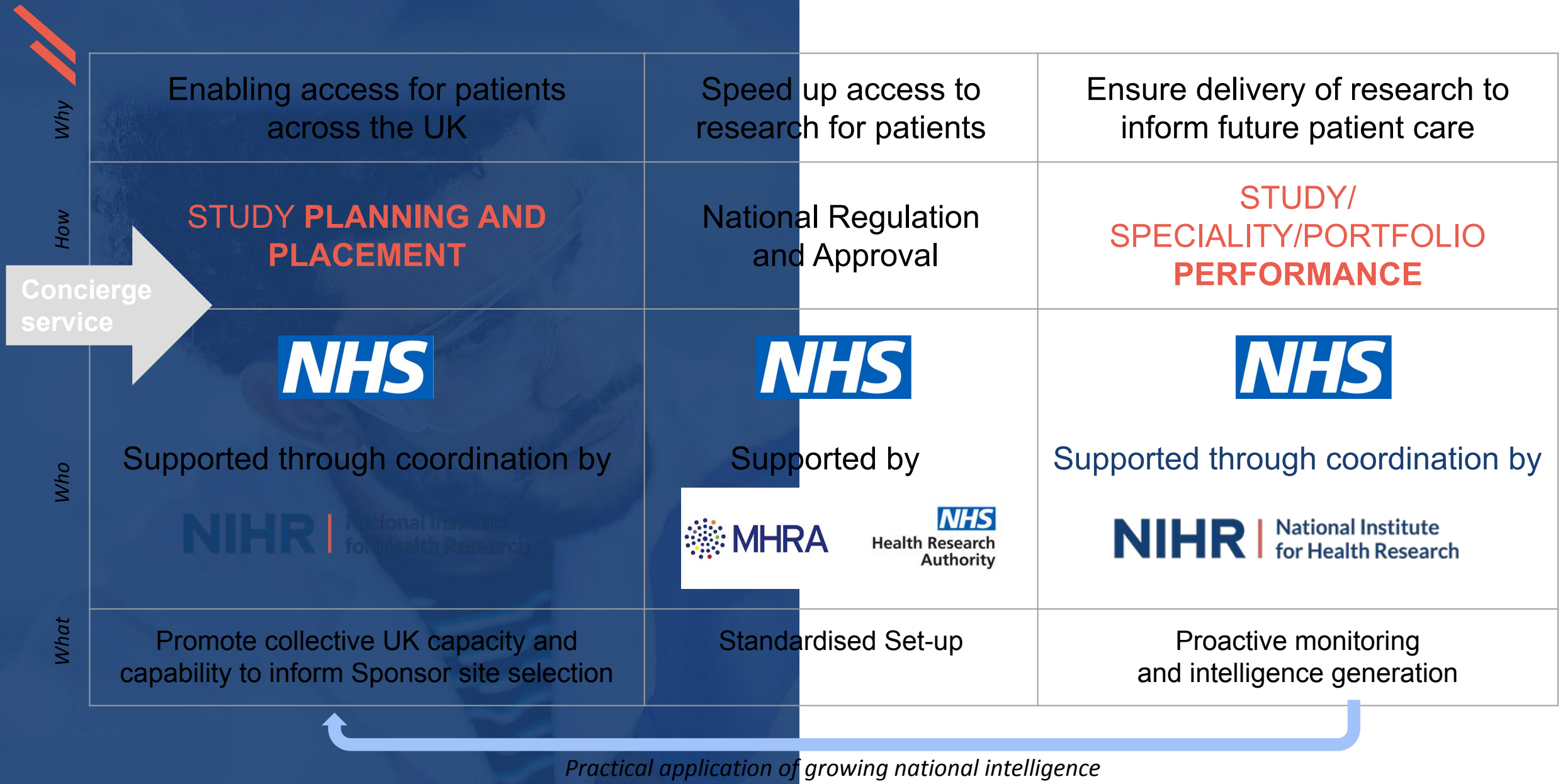


The UK's system-wide approach

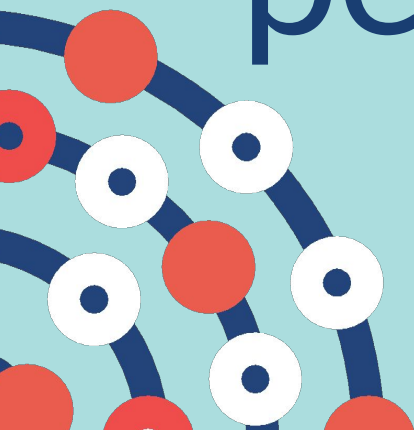
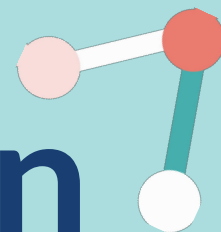
We are:

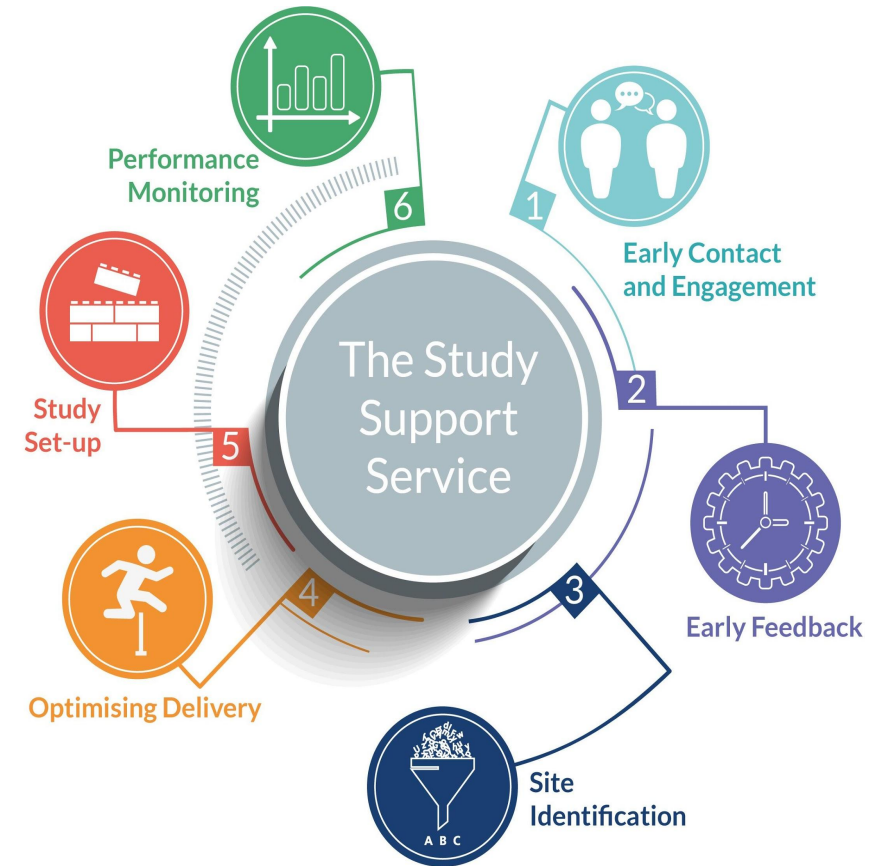
- One National Network covering all of England Operating across 15 geographical areas in England and 3 in the Devolved Administrations (Northern Ireland, Scotland & Wales).
- Each covering all study delivery in all therapy areas
- Comprised of one National Coordinating Centre and 15 Local Clinical Research Networks
- Including a specialty group containing key opinion leaders for all 30 therapeutic areas

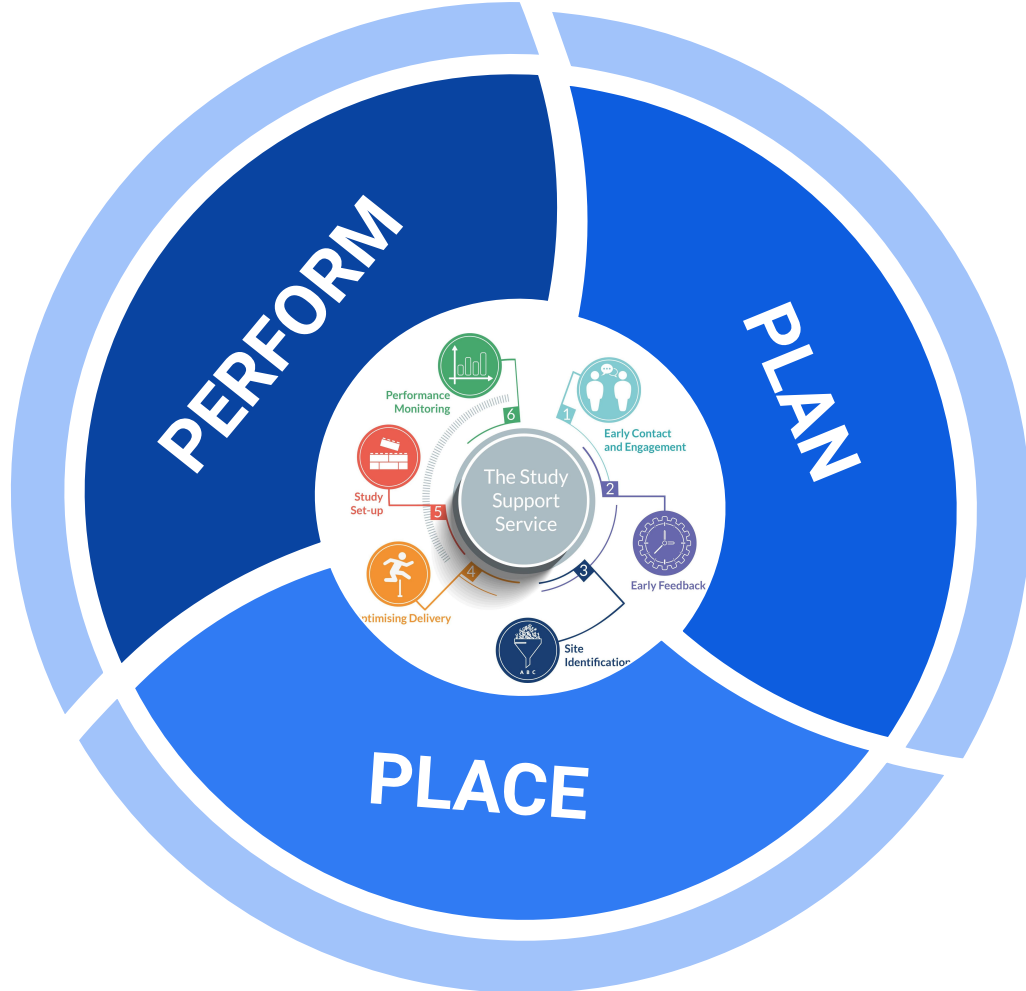




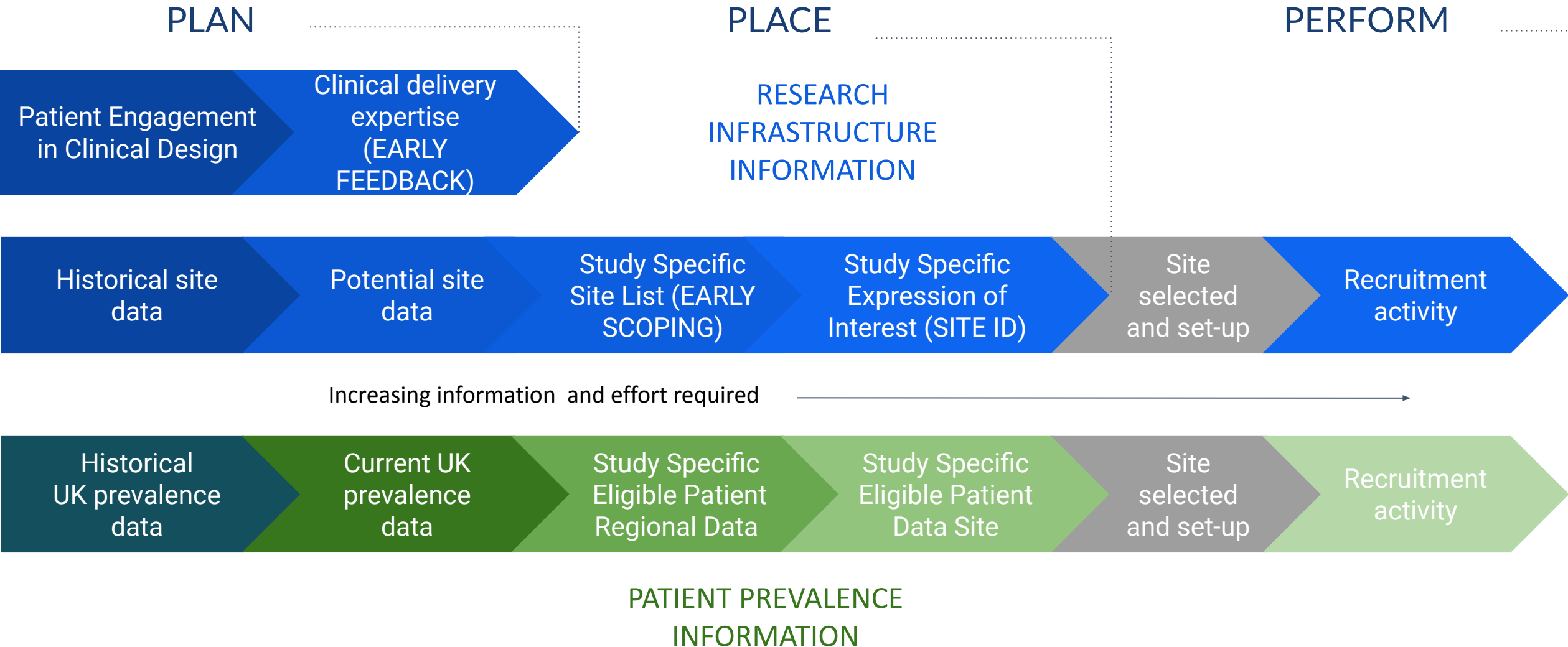
Nationwide coordination of research planning, placement and performance







Shares and collates growing layers of information



NHS-DRIVEN

NHS driven support
from the heart

PLANNING

Access to clinical
expertise, patient
groups, high level
prevalence and
costing tools

PLACEMENT

Identify interested
sites across the UK
and access research
infrastructure
intelligence



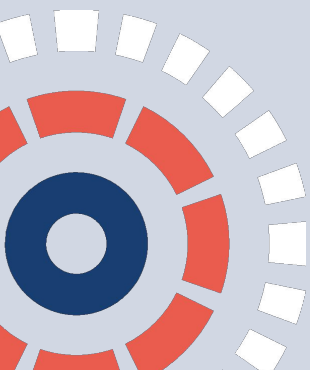
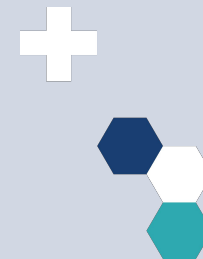
PERFORM

Nationwide
infrastructure to
facilitate research
set-up and delivery

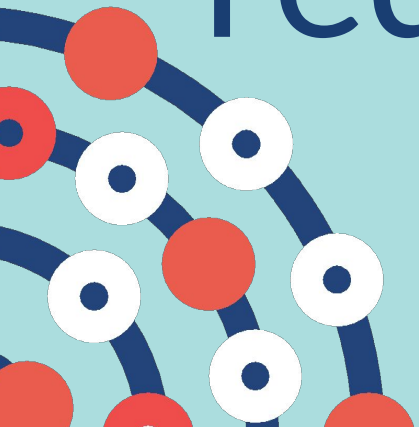
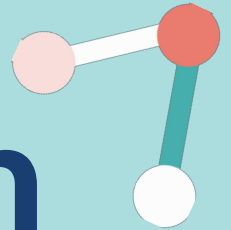
APPROVALS & SET-UP

Ideal path to access relevant
pre-approval support provided
by national specialists groups
(Pharmacy, Radiation)

Nationwide coordination of NHS study approvals and site set-up



Nationwide coordination to embed research within NHS provider requirements



COVID-19 Vaccines Research Delivery Programme

- Set up June 2020 - UK wide model of delivery
- Regional model of collaborating sites developed to enable large scale recruitment at vaccine hubs
- Recruitment of 47,331 recruits (09.12.2021)
- 23 studies have recruited, 16 closed to recruitment; 3 studies in set up, 8 open to recruitment.
- Initial studies were large scale and recruiting unvaccinated participants
- Portfolio evolving to smaller studies such as boosters, 3rd primary dose, adolescents, pregnancy.
- NHS Vaccine Research Registry - over 500,000 people have signed up

COVID-19 Vaccines Research Delivery Programme

Collaboration and communication:

- Vaccine Research Delivery Group, Operational Group and Pharmacy Group set up (UK wide representatives)
- Regional Vaccine Leads identified in each of the 18 regions (15 LCRNs ; 3 Devolved Administrations)
- COVID-19 vaccine Chief Investigator group brought together to collaborate across the studies
- Planning framework developed, and regions shared their knowledge and details of arrangements
- Regular updates sent out to Regional Vaccine Leads, and they had forum to discuss progress

NIHR Collaboration Across the NHS, Social Care and Research Study Teams: CRN Yorkshire and Humber Covid-19 Research Delivery Model

Tanya Turgoose
Industry Operations Manager, CRN Yorkshire and Humber



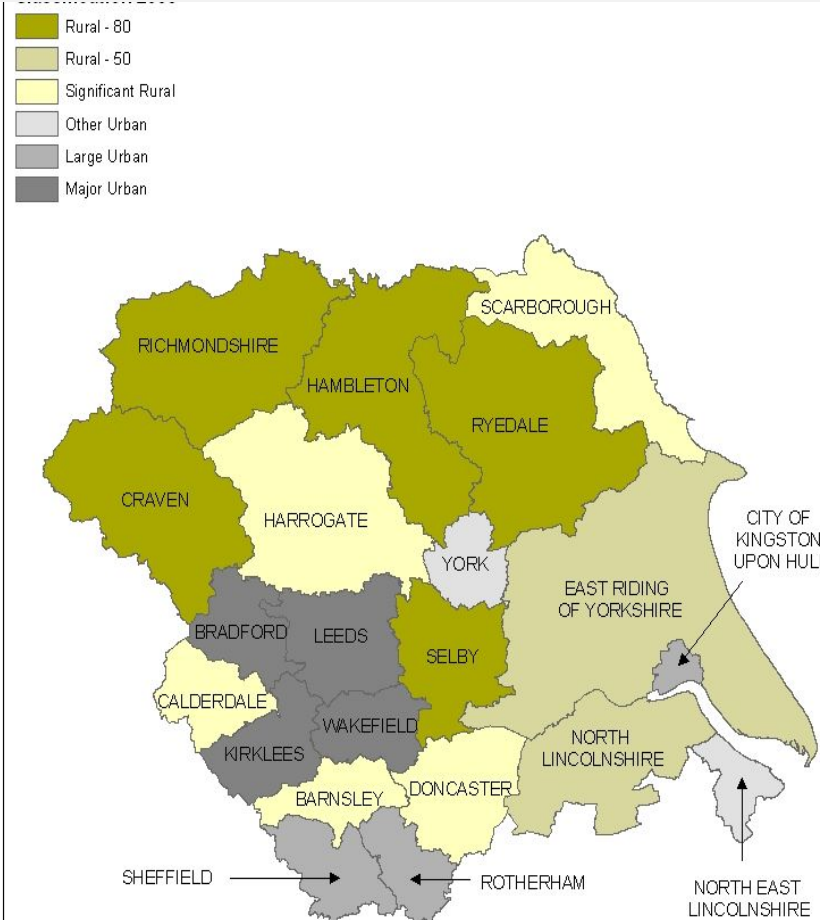
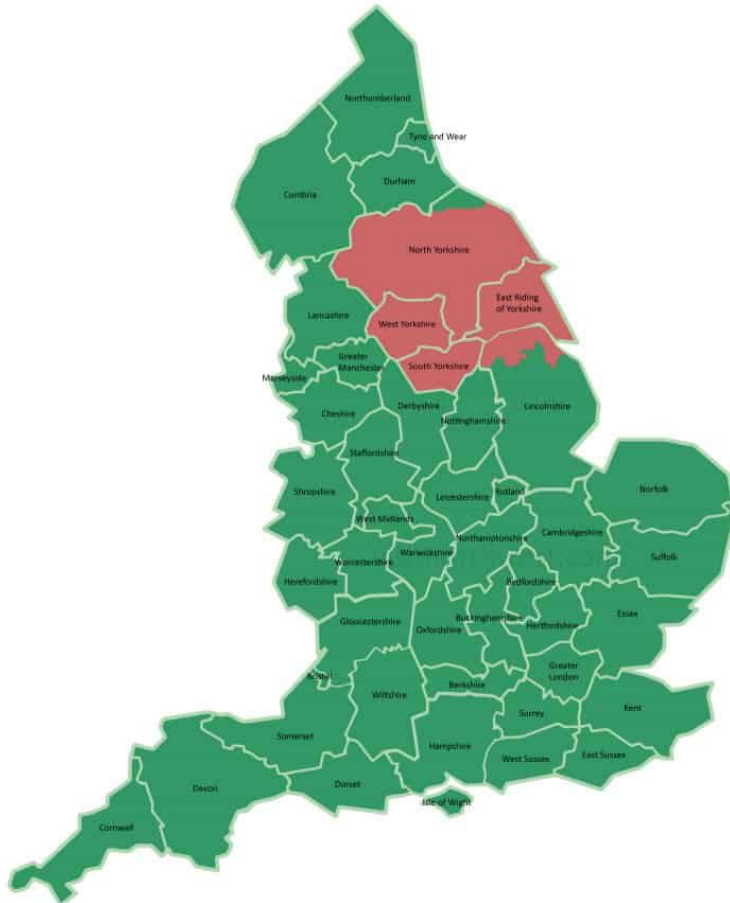
UK Approach

- **Single, collective UK system-wide approach** involving NIHR, Public Health England, UK Research & Innovation, HRA, MHRA and others
- Enables a complete picture of all COVID-19 Urgent Public Health Research activity across the UK
- Ensures appropriate geographical distribution of Urgent Public Health Research to maximise recruitment and minimise over-commitment of resource
- Urgent Public Health Research prioritisation by DHSC initiated expedited study set-up and delivery activities across the research system including performance oversight



Y&H Vaccine Delivery Model - Challenges

Yorkshire & Humber system-wide approach



CRN YH Vaccine Model (Challenges)

Geographically huge

- 15,500 square kilometers
- 5 Million people (10% of the population and around the same number as the whole of Scotland)
- 22 Local Authorities
- 3 ICS footprints

Regional coverage

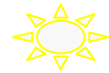
Equity of Access

Equity of Opportunity

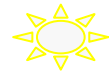
Scale - very high throughput needed



VTF Pump-priming Funding



CRN Yorkshire and Humber secured an additional £800K of Vaccine Task Force funding to pump-prime vaccine research delivery readiness

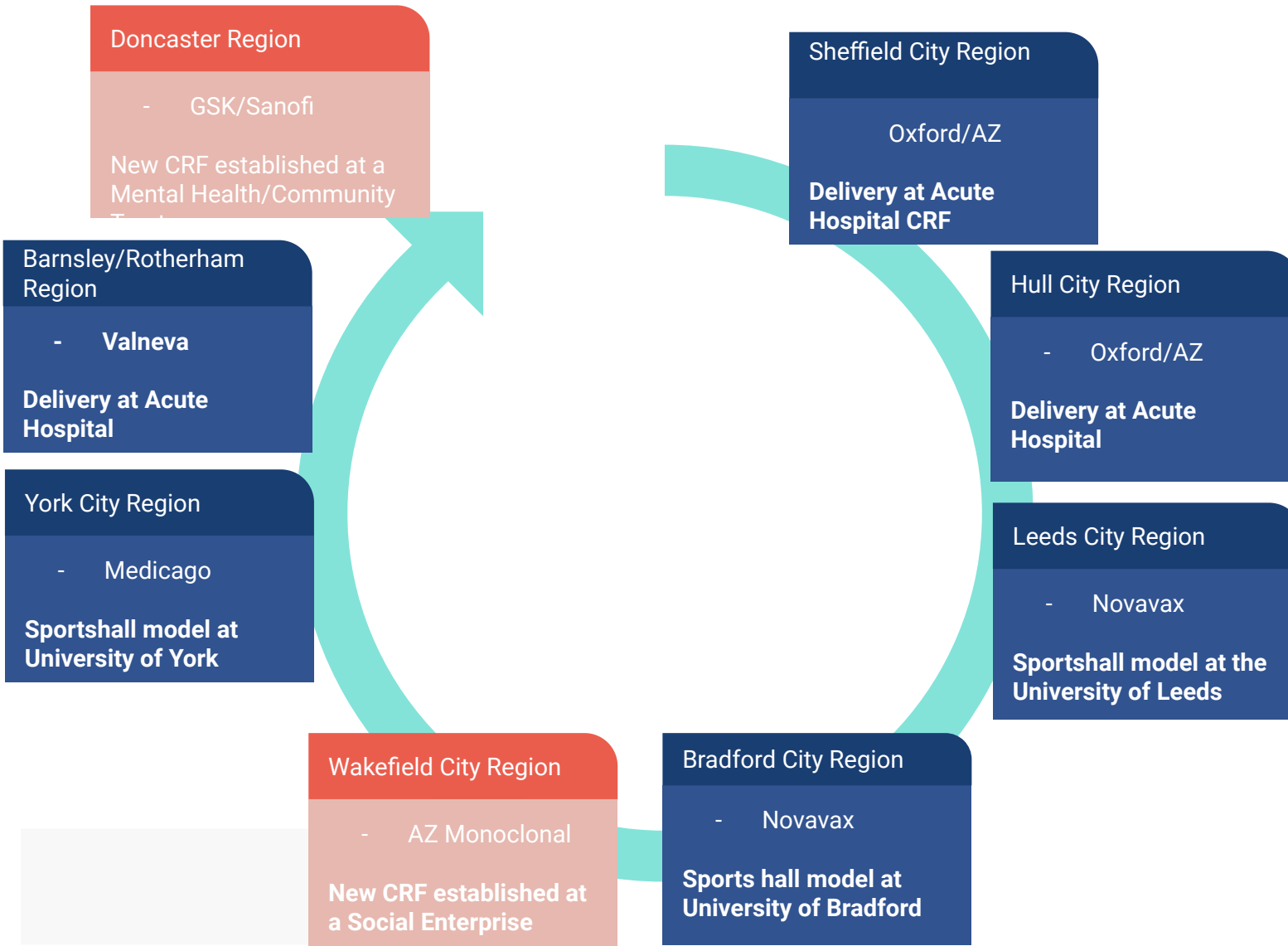


To be utilised for both study support costs and non-study support costs such as space and equipment



Y&H Vaccine Delivery Model - Rotational Vaccine Hubs

Yorkshire & Humber system-wide approach



CRN YH Vaccine Model (Rotational Hubs)

8 major vaccine hubs providing region-wide coverage

Placement on a rotational basis to ensure equity

Each hub is a city/region-wide model encompassing relevant Acute, Primary Care, CCG, council, HEI and social care partners

Each hub has working a steering group with membership from across the partners.

Hubs have offered to support one another where they are able as demand for resource shifts around the region. All hubs were supported by the CRN Y&H Agile Research Team.

BAME inclusion is a key part of the regions vaccine strategy.



A Closer Look - The Wakefield Hub



Together against COVID-19

The eight organisations which comprise the Wakefield Research partnership and helped to successfully deliver the trial are:

- Spectrum Community Health CIC
- Mid Yorkshire Hospitals NHS Trust
- NIHR Clinical Research Network (Yorkshire and Humber)
- Wakefield Council
- Bradford and Craven CCG
- Yorkshire Ambulance Service NHS Trust
- Connexus Healthcare
- South West Yorkshire Partnership NHS Foundation Trust



November 30, 2020

Categories

World-first for Wakefield as COVID-19 Antibody Trial begins

Read more



September 24, 2021

Categories

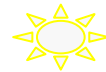
Success for Wakefield Research partners at the Pharma Times Awards!

Congratulations to our partners across the Wakefield Together network, who were collectively crowned "Clinical Site Team of the Year" at the Pharma Times Awards in September! The Wakefield Research network picked up the top prize for their work co-delivering the PROVENT COVID-19 Antibody Trial in 2020. Spectrum was a key delivery partner in the PROVENT project, led [...]

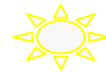
Collaboration: A Model for Success



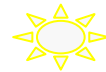
	CRN	Total RA ▾
1.	Yorkshire and Humber	2,821
2.	North West Coast	2,454
3.	Thames Valley and South Midlands	2,342
4.	South London	2,158
5.	North East and North Cumbria	1,728
6.	Greater Manchester	1,714
7.	West Midlands	1,633
8.	Wessex	1,375
9.	North West London	1,370
10.	West of England	1,335
11.	North Thames	1,324
12.	East Midlands	1,173
13.	Eastern	1,084
14.	South West Peninsula	992
15.	Kent, Surrey and Sussex	148



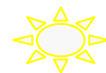
Highest recruiting region to ALL Vaccine trials



Highest recruiting region to the Oxford/AZ trial



Highest recruiting site to the Novavax trial



First Global patient recruited to AZ monoclonal antibody trial



Lasting success



Continuous collaborations



Lasting investment – two new community-based CRFs continue to be supported with additional funding from the host organisations and both have a new pipeline of research trials.



Supported by additional funding investment to develop a Direct Delivery Team (DDT) to support research delivery in the non-acute setting

Thank you

